



**ELIZADE UNIVERSITY,
ILARA-MOKIN,
ONDO STATE**

FACULTY: BASIC & APPLIED SCIENCES

DEPARTMENT: BIOLOGICAL SCIENCES

SECOND SEMESTER EXAMINATION

2013/2014 ACADEMIC SESSION

COURSE CODE: BIO 208

COURSE TITLE: CELL BIOLOGY AND HISTOLOGY (PRACTICAL)

DURATION: 1hr: 30mins

A handwritten signature in black ink, enclosed in a rectangular box.

HOD's SIGNATURE

NAME:.....MAT. No:.....

INSTRUCTIONS

Answer all the questions in the answer booklet.

Instruction

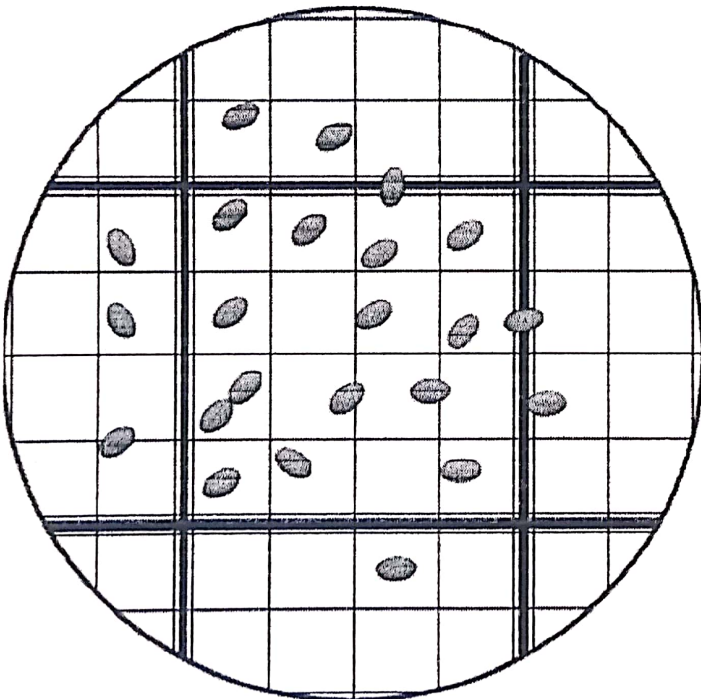
You are provided with the following materials:

Light microscope and prepared sample slides

Each of the five slides is mounted on five microscopes respectively.

1. I. Examine, identify and draw a well labelled diagram of each of the mitotic stages observed
II. Briefly explain events in each of the stages
III. Contrast between meiosis and mitosis
IV. Explain why mitosis is a multiplication division

2. The diagram below shows part of a haemocytometer grid being used to estimate the number of bacteria in a sample



- (i) Identify a possible source of error shown in the diagram.
- (ii) Suggest how the effects of this error could be minimized.